

M7-PTZDWS-18X

Installing 8GB SDHC card

Created by Colin.

M7-PTZDWS-18X Housing

- A step by step description of how to install a SDHC card in the M7-PTZDWS-18X



Glass Dome cover

- Unscrew the glass dome cover counter clockwise.



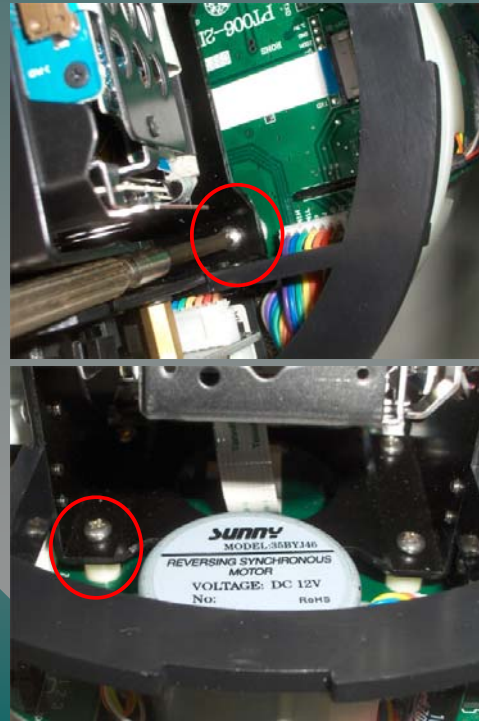
Camera Shield

- Remove the four screws holding the cover to the camera housing.
- Note that the opening on the shield has a deep side and shallow side. Deep side is on the side of the lens.



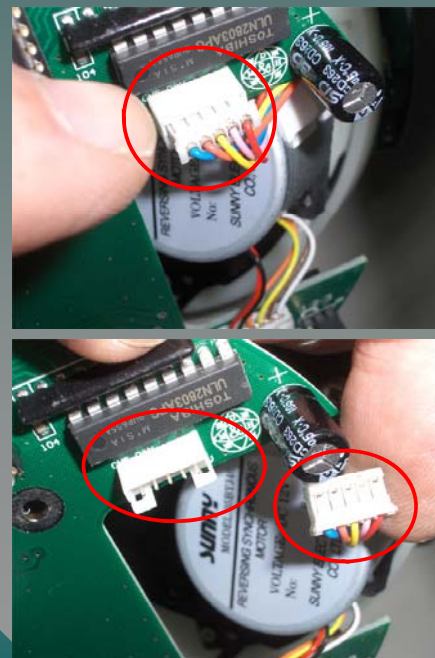
Removing the camera

- Four screws hold the camera to the circuit board. There are white plastic spacers beneath the circuit board which will fall out when the screws are removed.



Disconnecting the plugs

- Pull the plug from the socket. There are no clips, just pull gently.



Disconnecting the plugs

- Remove the second plug in the same fashion.

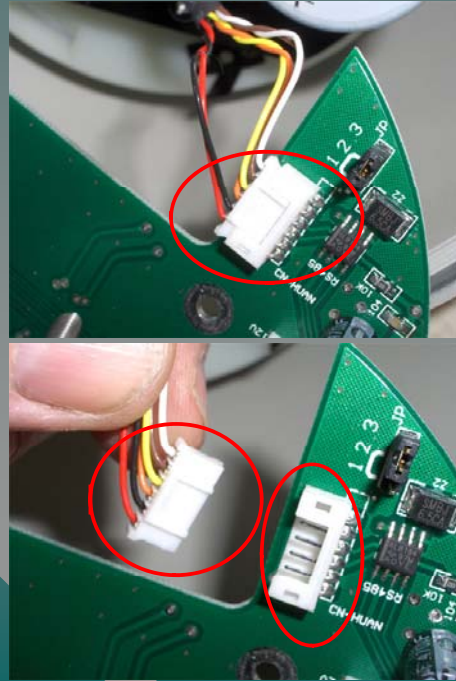
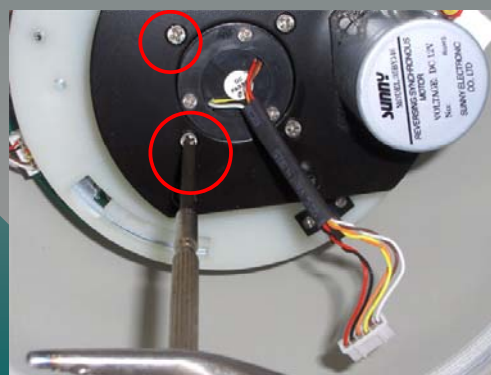


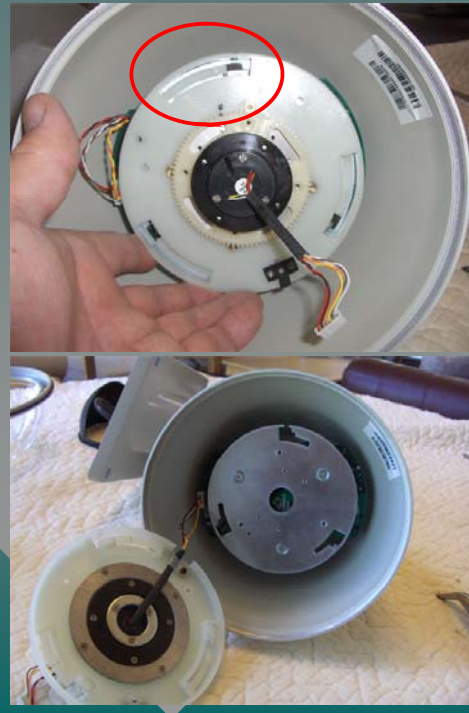
Plate removal

- After you have removed the first circuit board, remove the four screws holding the black plate behind it.
- I used a marker pen to draw a line across the centre disc and the outer disc so they could be put back in the same location.



Plastic Plate removal

- The next item is the plastic plate. This is held on by the three slotted clips. Just turn the disc counter clockwise and it will come free. No screws hold it on!



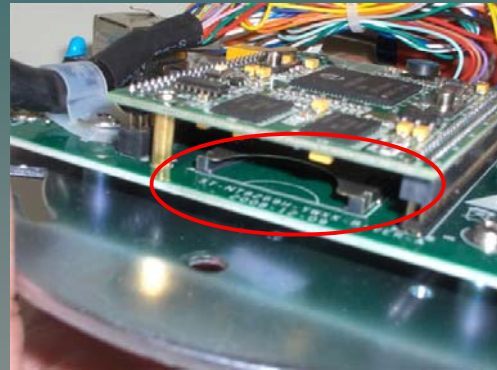
Metal Disc removal

- Now remove the three screws from the metal plate.
- Beneath this plate is the circuit board that holds the SDHC card.



Circuit Board

- The circuit board has a slot for the SDHC.
- The card slides into the slot as shown.
- Make sure the card is **not** locked (Tab on left side of card).



Circuit Board

- When you push the card into the slot you will feel it lock into position.
- If you have to remove the card, just push the card in again and it will unlock.



Re-assemble in reverse order

- In reverse order, put the camera back together.
- The only tricky part will be attaching the camera to the ring. The white plastic spacers have to go under the circuit board.

Getting the Spacers in Place.

- I used a set of curved pliers.
- Also needle nose pliers to hold the screw.
- Hold the spacer beneath the circuit board with the curved pliers and insert the screw through the top of the plate.





That's it!

Hope this helps anyone that has to do this.

Colin.